

# Big Idea (Graphic Design) | Spring 2010

## Outtakes | *Brandon Riesgo*

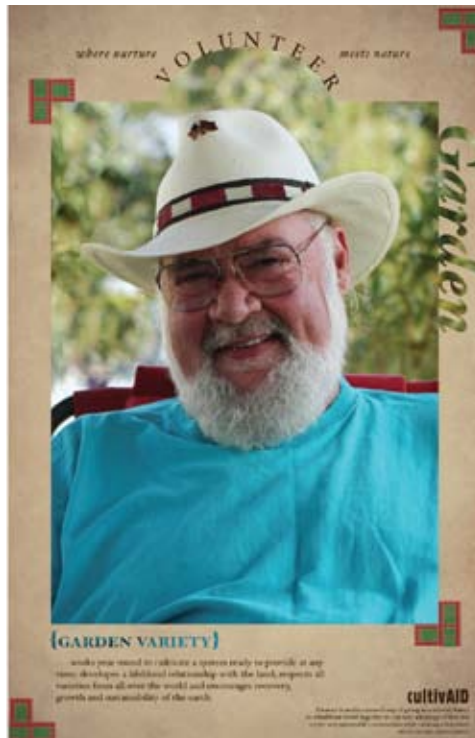
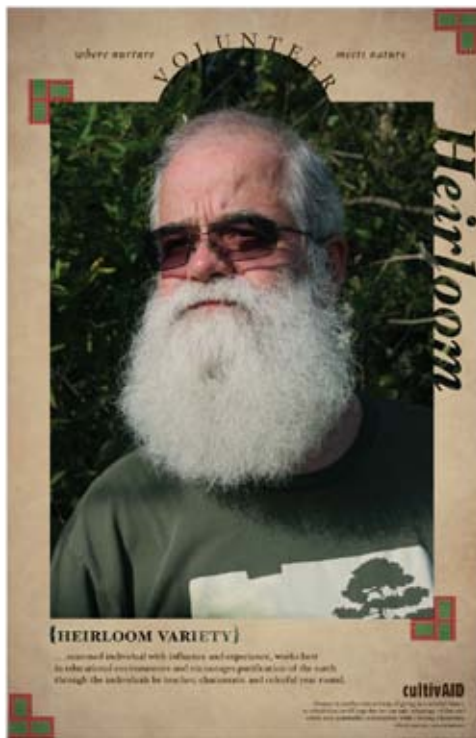
### Ad Posters





CultivAid | Jackie Baxter

Ad Posters



Patches | *Mamie McIntosh*

Ad Posters



Website

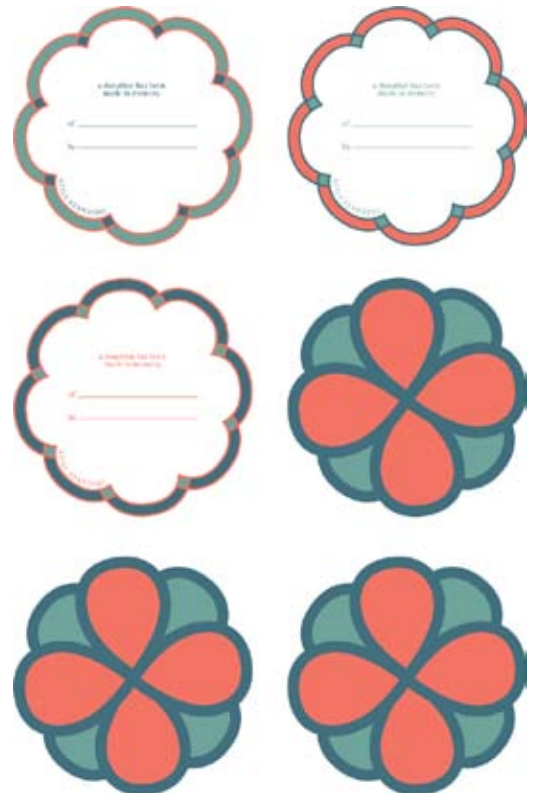


Still Standing | Sara Lauderdale

Ad Posters



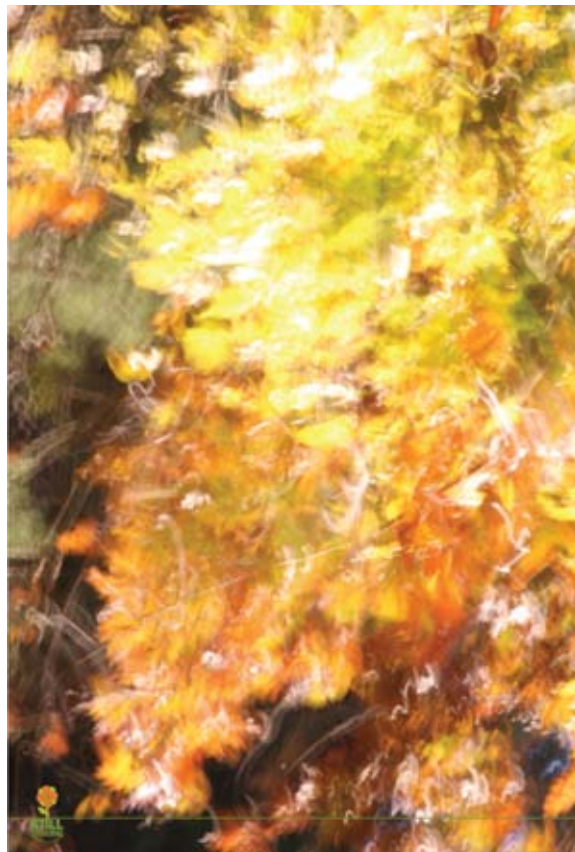
Logo & Gift Card Packaging



Website



In-Store Posters





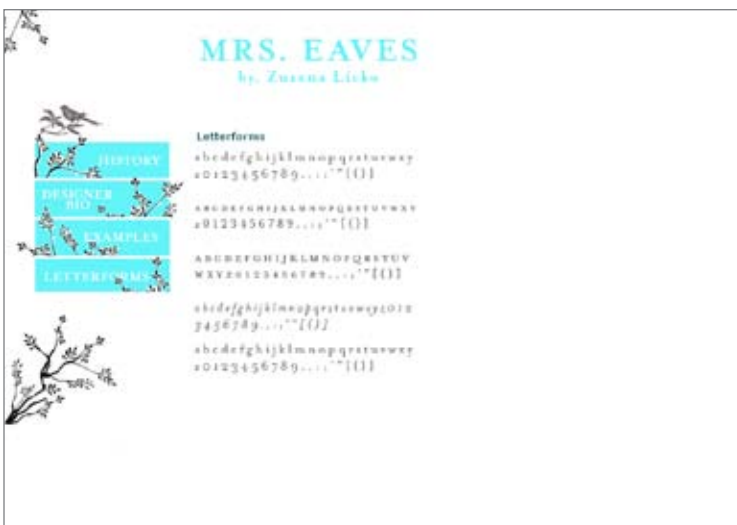
Rebecca Long | *Mojoware*



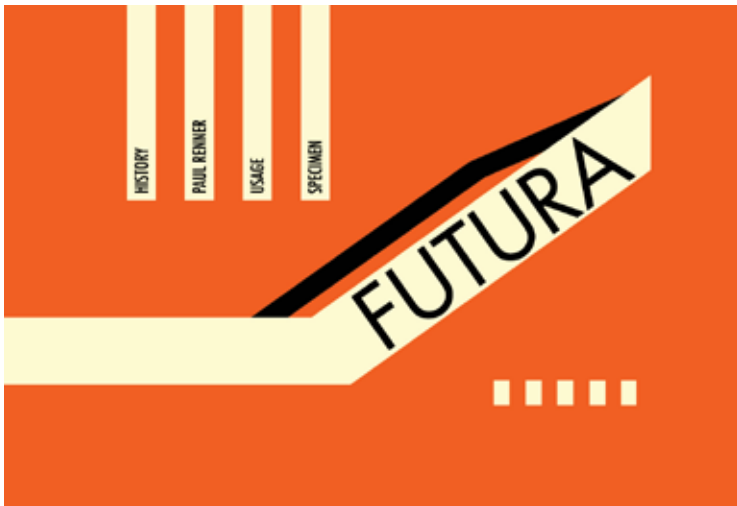
Sara Lauderdale | *Redbud Farm*



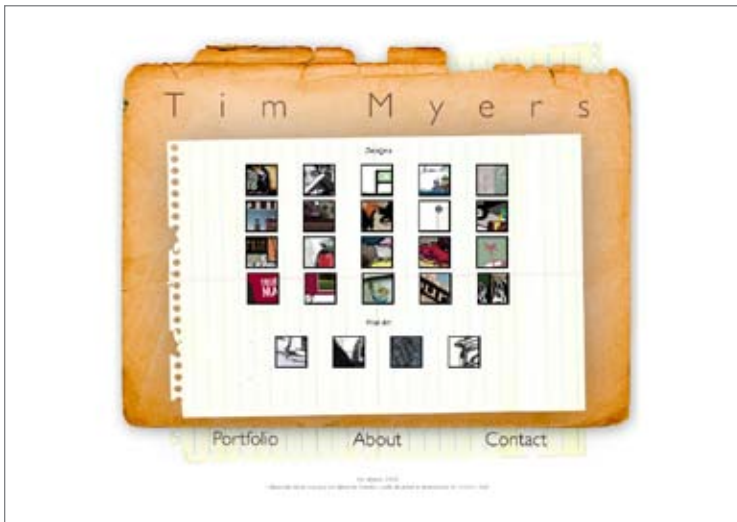
Sara Lauderdale | *Mrs. Eaves*



Don Greenwood | *Futura*



Tim Myers | *Portfolio*



Lauren Leslie | *Portfolio*

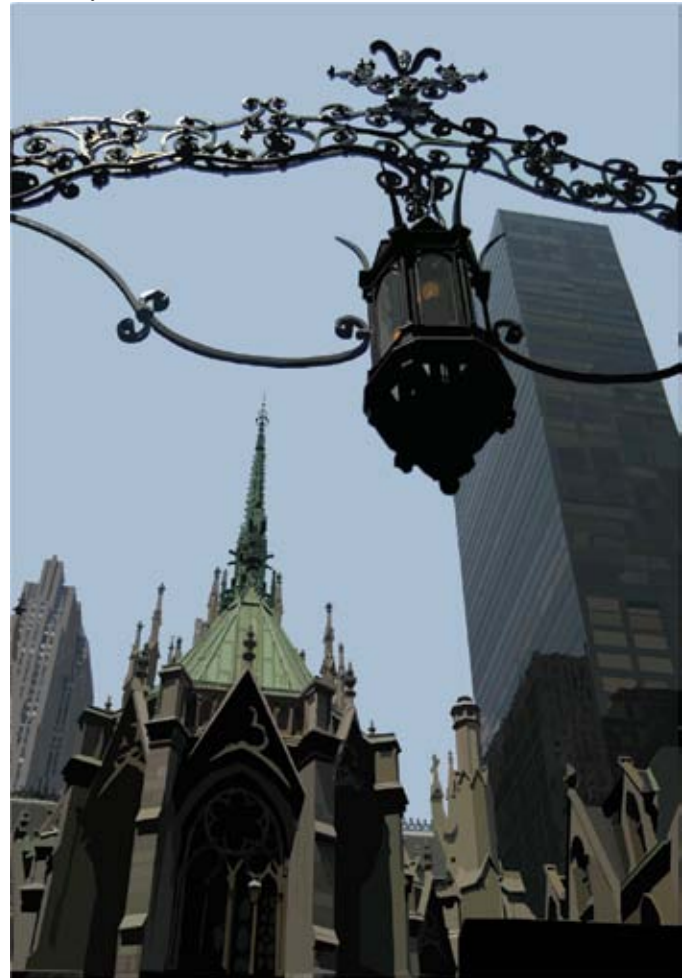


In this project, students were required to copy a photograph using Illustrator. This forced them to learn Illustrator key basics, such as layering, anchor point manipulation, and the pen tool.

Rob Toombs



Causey Cato



Kirby Davis



Dave Whitley



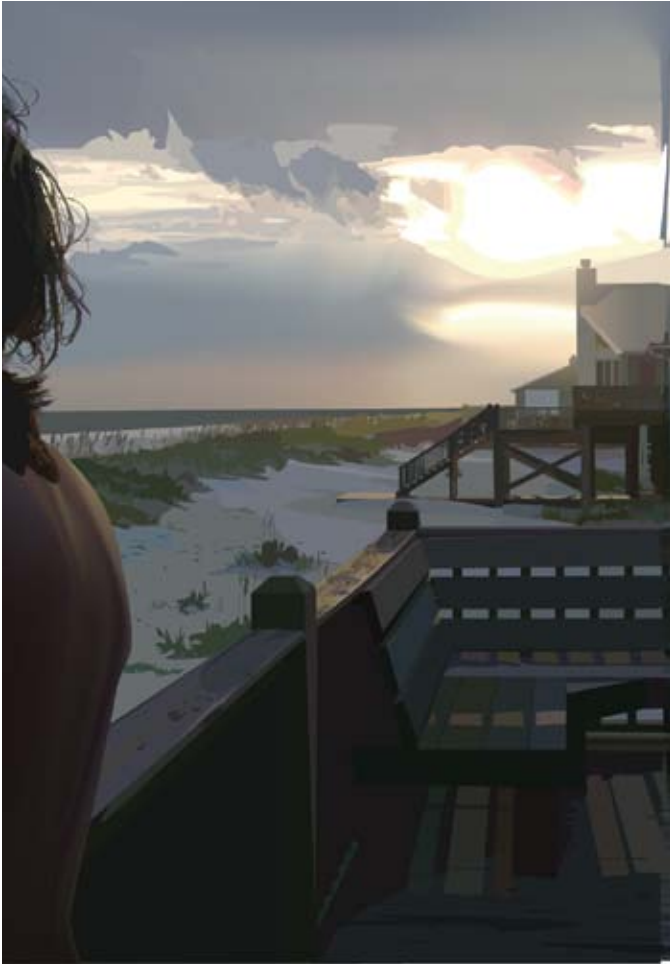
Landon Street



Ashley Bennett



Mary Switzer



Kaitlin Mullins



In this project, students were required to blend a current photo with an old photo to make it look seamless. This was an introductory project into Photoshop, requiring the skill to select, erase, mask, and blend images. This also helps students learn specific tools and their limitation, such as the magic wand, clone stamp, healing and patch tool.

Brooke Burke



Mary Switzer

